

ISO A couplings made to the ISO 7241:2014 Series B Standard

• IB, IBZ SERIES

INTRODUCTION

IB Series ISO B couplings are the ideal choice where a tough, durable product of superior quality is required. They are perfectly suited to agricultural and industrial applications.

CONSTRUCTION

Carbon steel with trivalent plating (Zinc nickel plating available)

- Fitted with NBR seals (FKM seals available)
- Also available in AISI 316 stainless steel (See IBS Series)
- Also available in brass (See IBB Series)

FEATURES

- Optional zinc nickel plating provides corrosion resistance (1200 hours with no red rust in salt spray tests)
- Poppet valves have balanced springs
- Locking ball system allows quick connection
- Bidirectional flow

ACCESSORIES

- Dust caps, plugs and seal kits are available for the IB Series



SPECIFICATIONS

- OPERATING TEMPERATURES (WITH NBR SEALS): -40°C (-40°F) TO 106°C (223°F), (WITH FKM SEALS): -20°C (-4°F) TO 200°C (392°F)

APPLICATIONS

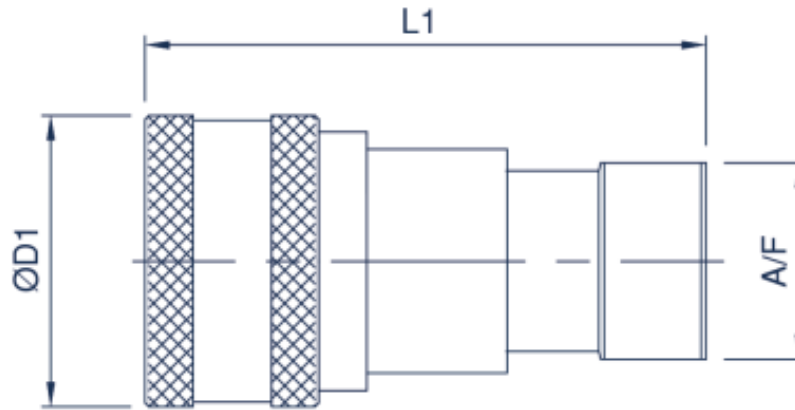
- AGRICULTURAL
- MOBILE
- CONSTRUCTION
- GENERAL HYDRAULICS

IB, IBZ SERIES PERFORMANCE CHARACTERISTICS

| Body Size | IB04 | IB06 | IB10 | IB12 | IB19 | IB25 | IB40 | IB50 |
|------------------------------------|-------------------------------|------|------|------|------|------|------|------|
| | Pressure in bar - Flow in LPM | | | | | | | |
| | Pressure in PSI - Flow in GPM | | | | | | | |
| Maximum working pressure (Coupled) | 500 | 400 | 350 | 300 | 300 | 280 | 170 | 100 |
| Burst pressure (Coupled) | 7250 | 5800 | 5075 | 4350 | 4350 | 4060 | 2465 | 1450 |
| Burst pressure (Male) | 1900 | 1700 | 1500 | 1350 | 1300 | 1060 | 750 | 600 |
| Burst pressure (Female) | 1950 | 1800 | 1550 | 1400 | 1350 | 1100 | 800 | 700 |
| Rated flow | 3 | 12 | 23 | 45 | 106 | 189 | 375 | 560 |
| | 0.8 | 3.2 | 6 | 12 | 28 | 50 | 99.1 | 148 |

ISO A COUPLINGS MADE TO THE ISO 7241:2014 SERIES B STANDARD

• IB, IBZ SERIES



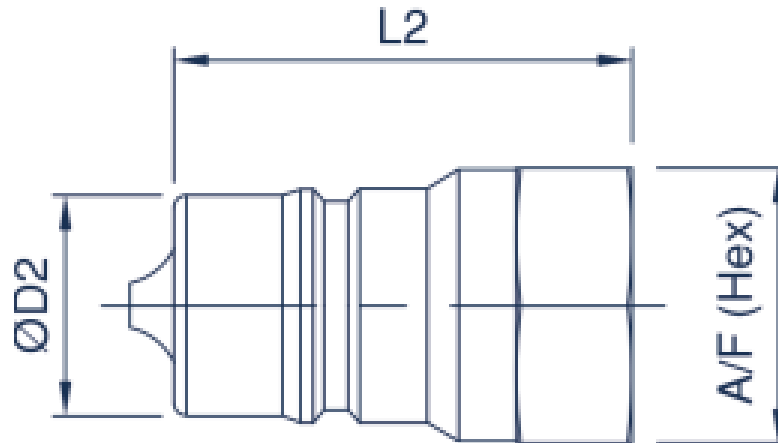
IB, IBZ SERIES FEMALE COUPLING

| Body Size | Part Number | Thread Size | D1 | | L1 | | A/F | |
|------------|-------------|--------------|-------|------|-------|------|------|------|
| | | | mm | inch | mm | inch | mm | inch |
| 04 (1/8) | IB04-F-02G | 1/8 BSPP | 24.0 | 0.94 | 48.0 | 1.89 | 14.0 | 0.55 |
| | IB04-F-02N | 1/8 NPTF | 24.0 | 0.94 | 48.0 | 1.89 | 14.0 | 0.55 |
| | IB04-F-04S | 7/16-20 UNF | 24.0 | 0.94 | 48.0 | 1.89 | 14.0 | 0.55 |
| 06 (1/4) | IB06-F-04G | 1/4 BSPP | 28.5 | 1.12 | 58.0 | 2.28 | 19.0 | 0.75 |
| | IB06-F-04N | 1/4 NPTF | 28.5 | 1.12 | 58.0 | 2.28 | 19.0 | 0.75 |
| | IB06-F-06S | 9/16-18 UNF | 28.5 | 1.12 | 58.0 | 2.28 | 19.0 | 0.75 |
| 10 (3/8) | IB10-F-06G | 3/8 BSPP | 35.0 | 1.38 | 65.0 | 2.56 | 24.0 | 0.95 |
| | IB10-F-06N | 3/8 NPTF | 35.0 | 1.38 | 65.0 | 2.56 | 24.0 | 0.95 |
| | IB10-F-06S | 9/16-18 UNF | 35.0 | 1.38 | 65.0 | 2.56 | 24.0 | 0.95 |
| | IB10-F-08S | 3/4-16 UN | 35.0 | 1.38 | 69.0 | 2.72 | 24.0 | 0.95 |
| 12 (1/2) | IB12-F-08G | 1/2 BSPP | 44.5 | 1.75 | 74.0 | 2.91 | 28.5 | 1.12 |
| | IB12-F-08N | 1/2 NPTF | 44.5 | 1.75 | 74.0 | 2.91 | 28.5 | 1.12 |
| | IB12-F-08S | 3/4-16 UNF | 44.5 | 1.75 | 74.0 | 2.91 | 28.5 | 1.12 |
| | IB12-F-10S | 7/8-14 UNF | 44.5 | 1.75 | 74.0 | 2.91 | 28.5 | 1.12 |
| 19 (3/4) | IB19-F-12G | 3/4 BSPP | 54.0 | 2.13 | 92.0 | 3.62 | 36.0 | 1.42 |
| | IB19-F-12N | 3/4 NPTF | 54.0 | 2.13 | 92.0 | 3.62 | 36.0 | 1.42 |
| | IB19-F-12S | 1 1/16-12 UN | 54.0 | 2.13 | 92.0 | 3.62 | 36.0 | 1.42 |
| 25 (1) | IB25-F-16G | 1 BSPP | 64.0 | 2.52 | 103.0 | 4.06 | 41.0 | 1.61 |
| | IB25-F-16N | 1 NPTF | 64.0 | 2.52 | 103.0 | 4.06 | 41.0 | 1.61 |
| | IB25-F-16S | 1 5/16-12 UN | 64.0 | 2.52 | 103.0 | 4.06 | 41.0 | 1.61 |
| 40 (1 1/2) | IB40-F-20G | 1 1/4 BSPP | 73.5 | 2.89 | 124.0 | 4.88 | 65.0 | 2.56 |
| | IB40-F-20N | 1 1/4 NPTF | 73.5 | 2.89 | 124.0 | 4.88 | 65.0 | 2.56 |
| | IB40-F-24G | 1 1/2 BSPP | 73.5 | 2.89 | 124.0 | 4.88 | 65.0 | 2.56 |
| | IB40-F-24N | 1 1/2 NPT | 73.5 | 2.89 | 124.0 | 4.88 | 65.0 | 2.56 |
| 50 (2) | IB50-F-32G | 2 BSPP | 101.0 | 3.98 | 141.5 | 5.57 | 90.0 | 3.54 |
| | IB50-F-32N | 2 NPTF | 101.0 | 3.98 | 141.5 | 5.57 | 90.0 | 3.54 |

*For all other configurations or thread types please contact the sales office.

ISO A COUPLINGS MADE TO THE ISO 7241:2014 SERIES B STANDARD

• IB, IBZ SERIES



IB, IBZ SERIES MALE COUPLING

| Body Size | Part Number | Thread Size | D2 | | L2 | | A/F | |
|------------|-------------|--------------|------|------|-------|------|------|------|
| | | | mm | inch | mm | inch | mm | inch |
| 04 (1/8) | IB04-M-02G | 1/8 BSPP | 10.9 | 0.43 | 29.0 | 1.14 | 17.0 | 0.67 |
| | IB04-M-02N | 1/8 NPTF | 10.9 | 0.43 | 29.0 | 1.14 | 17.0 | 0.67 |
| | IB04-M-04S | 7/16-20 UNF | 10.9 | 0.43 | 29.0 | 1.14 | 17.0 | 0.67 |
| 06 (1/4) | IB06-M-04G | 1/4 BSPP | 14.2 | 0.56 | 36.0 | 1.42 | 19.0 | 0.75 |
| | IB06-M-04N | 1/4 NPTF | 14.2 | 0.56 | 36.0 | 1.42 | 19.0 | 0.75 |
| | IB06-M-06S | 9/16-18 UNF | 14.2 | 0.56 | 36.0 | 1.42 | 19.0 | 0.75 |
| 10 (3/8) | IB10-M-06G | 3/8 BSPP | 19.1 | 0.75 | 40.0 | 1.57 | 24.0 | 0.95 |
| | IB10-M-06N | 3/8 NPTF | 19.1 | 0.75 | 40.0 | 1.57 | 24.0 | 0.95 |
| | IB10-M-06S | 9/16-18 UNF | 19.1 | 0.75 | 40.0 | 1.57 | 24.0 | 0.95 |
| | IB10-M-08S | 3/4-16 UN | 19.1 | 0.75 | 44.0 | 1.73 | 24.0 | 0.95 |
| 12 (1/2) | IB12-M-08G | 1/2 BSPP | 23.5 | 0.93 | 46.5 | 1.83 | 28.5 | 1.12 |
| | IB12-M-08N | 1/2 NPTF | 23.5 | 0.93 | 46.5 | 1.83 | 28.5 | 1.12 |
| | IB12-M-08S | 3/4-16 UNF | 23.5 | 0.93 | 46.5 | 1.83 | 28.5 | 1.12 |
| | IB12-M-10S | 7/8-14 UNF | 23.5 | 0.93 | 46.5 | 1.83 | 28.5 | 1.12 |
| 19 (3/4) | IB19-M-12G | 3/4 BSPP | 31.4 | 1.24 | 56.0 | 2.20 | 36.0 | 1.42 |
| | IB19-M-12N | 3/4 NPTF | 31.4 | 1.24 | 56.0 | 2.20 | 36.0 | 1.42 |
| | IB19-M-12S | 1 1/16-12 UN | 31.4 | 1.24 | 56.0 | 2.20 | 36.0 | 1.42 |
| 25 (1) | IB25-M-16G | 1 BSPP | 37.8 | 1.49 | 63.0 | 2.48 | 41.0 | 1.61 |
| | IB25-M-16N | 1 NPTF | 37.8 | 1.49 | 63.0 | 2.48 | 41.0 | 1.61 |
| | IB25-M-16S | 1 5/16-12 UN | 37.8 | 1.49 | 63.0 | 2.48 | 41.0 | 1.61 |
| 40 (1 1/2) | IB40-M-20G | 1 1/4 BSPP | 44.5 | 1.75 | 122.0 | 4.80 | 65.0 | 2.56 |
| | IB40-M-20N | 1 1/4 NPTF | 44.5 | 1.75 | 122.0 | 4.80 | 65.0 | 2.56 |
| | IB40-M-24G | 1 1/2 BSPP | 44.5 | 1.75 | 122.0 | 4.80 | 65.0 | 2.56 |
| | IB40-M-24N | 1 1/2 NPTF | 44.5 | 1.75 | 122.0 | 4.80 | 65.0 | 2.56 |
| 50 (2) | IB50-M-32G | 2 BSPP | 63.2 | 2.49 | 139.2 | 5.48 | 90.0 | 3.54 |
| | IB50-M-32N | 2 NPTF | 63.2 | 2.49 | 139.2 | 5.48 | 90.0 | 3.54 |

*For all other configurations or thread types please contact the sales office.